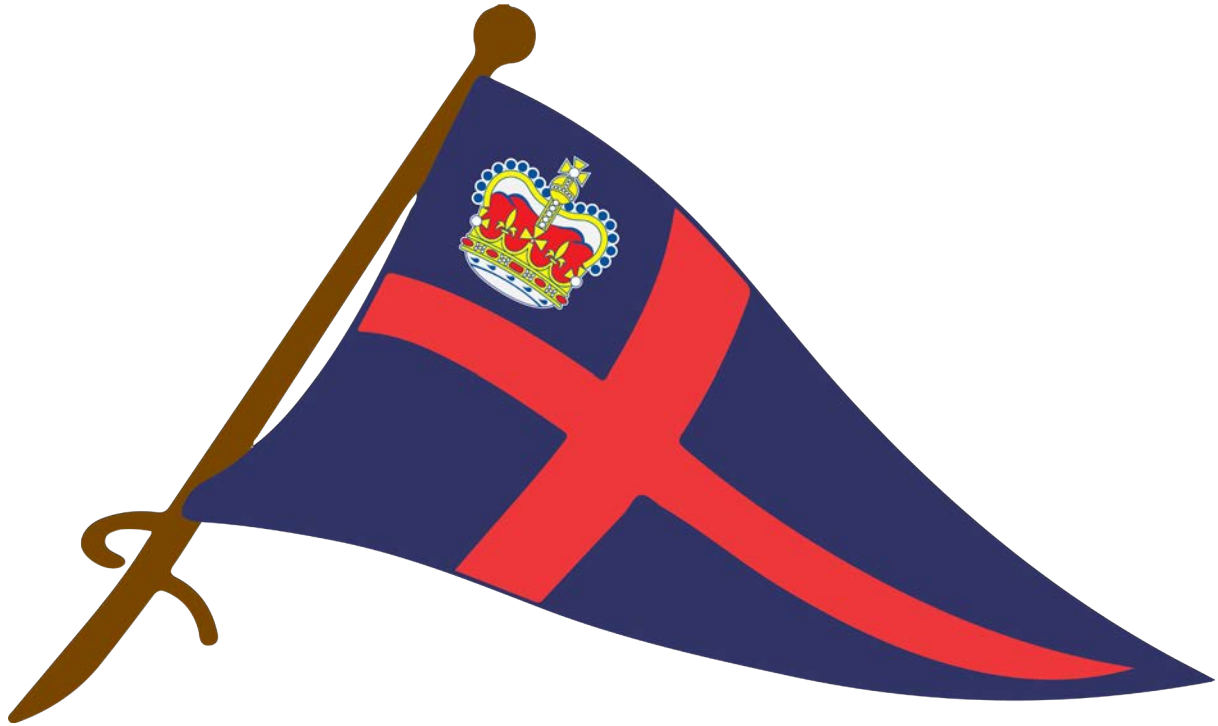


ROYAL PRINCE ALFRED YACHT CLUB

Prospective Member Information



16 Mitala Street, Newport, 2106
(02) 9998 3700
membership@rpayc.com.au
www.rpayc.com.au



Royal Prince Alfred Yacht Club (RPAYC), colloquially known as “The Alfred’s”, is a racing and sailing club based on Pittwater. We offer year-round inshore and offshore racing, cruising, centreboard dinghy racing, sail training and courses with a large marina accommodating up to 352 vessels.

The Alfred’s strength comes from a simple focus on its core Constitutional objective; “to promote the sport of yachting and boating” and its Vision: “Excellence in Sailing”.

Why not come to the Club and see for yourself?

HISTORY OF THE CLUB

It is known that a club called The Mosquito Yacht Club was founded in 1856.

On Tuesday, 15th October 1867, an advertisement was placed in The Sydney Morning Herald - "Mosquito Yacht Club - Boatowners wishing to join please meet at McGrath's at 8 tonight." The advertised meeting duly took place at Punch & McGraths Hotel in King Street and, with Mr. T. Strickland in the chair, it was decided to form a yacht club to be called "Prince Alfred Yacht Club."

The name Prince Alfred was adopted to commemorate Prince Alfred's forthcoming visit to Sydney. In January 1868, His Royal Highness, Prince Alfred, The Duke of Edinburgh, in command of HMS Galatea sailed into Port Jackson. He was met by two lines of yachts from the Royal Sydney Yacht Squadron and the Prince Alfred Yacht Club, between which HMS Galatea passed.

In August 1911, Prince Alfred Yacht Club was given permission by King George V to use the prefix "Royal".

The Club originally occupied premises in Moore Street, Sydney, known today as Martin Place and it eventually moved into 51 Castlereagh Street. In 1956, the Club purchased property in Rowe Street and a new building was built on the site.

In 1919, the Committee decided that Sydney Harbour was becoming too congested for yacht racing and a sub-committee was formed to inspect land that would be suitable for yacht racing in the Pittwater area.

As a result, Green Point was purchased for this purpose for an amount of 650 pounds. Apart from a few tree-planting ceremonies, the land remained practically unused until a group of enthusiasts, who had built Jubilee class yachts, banded together and built a boatshed, slipway and pontoon to cater for their needs. The Governor of New South Wales, the Honorary Commodore of the Club, Lord Wakehurst, officially opened the current premises on 17th December, 1938. No less than 22 Jubilees started in the race held that day.

Unfortunately, during World War II yachting in Pittwater and Sydney Harbour was disbanded. After the war, in 1947, the boatshed was increased in size, moorings were laid in Crystal Bay and Pittwater again came to life.

In 1956, a caretaker's cottage was erected adjacent to the boatshed; a liquor licence obtained and a small bar built by converting four lockers in the boatshed. Four sheep were kept on Green Point for use as mobile lawn mowers and a cattle ramp was erected at the front entrance to contain the sheep within the property.

The slipway and boat storage area were re-built in 1957 by the use of voluntary labour and the racing fleet on Pittwater was increasing in leaps and bounds.

The Club purchased the adjoining property, Moonbar, on the western side of Mitala Street and converted the building into a Clubhouse. This land, previously owned by Mr. Ashley Buckingham, became known as Buckingham Palace, and it was a popular venue for club members, with a lawn area and in-built swimming pool.

In 1962, the Club dredged the north western side of Crystal Bay and reclaimed an area between Moonbar and Green Point.

Marina A, accommodating some 52 vessels, was constructed from the dredged area. At the same time, a hardstand area was established in front of the cottage to accommodate ten 5.5 metre yachts.

Yacht racing on Pittwater in the sixties was gaining momentum. Moonbar although extended, was unable to cope with the influx of members and guests, so it was decided that a new clubhouse should be built on Green Point to cater for the larger patronage. On 15th May 1968, probably the club's most important function was held.

His Royal Highness, Prince Phillip, the Duke of Edinburgh visited to lay a foundation stone for the present clubhouse. Unfortunately, due to torrential rain and a 60-knot southerly, Prince Phillip laid the stone by remote control from Moonbar. Regardless, it was a memorable day for members when this royal "sailor" joined them for lunch.

1969/70 saw significant progress in the club's development. Pittwater was booming, the city premises was wanted by developers and an opportunity arose for the city club to join The Sydney Club, formerly The Millions Club. By selling the city property and developing Pittwater, it meant that members using the city premises would be happily accommodated almost next door at the Sydney Club and development could continue at Pittwater. The Sydney Club was located at 9 Rowe Street, Sydney, and all RPAYC members were automatically yachting members of the Sydney Club.

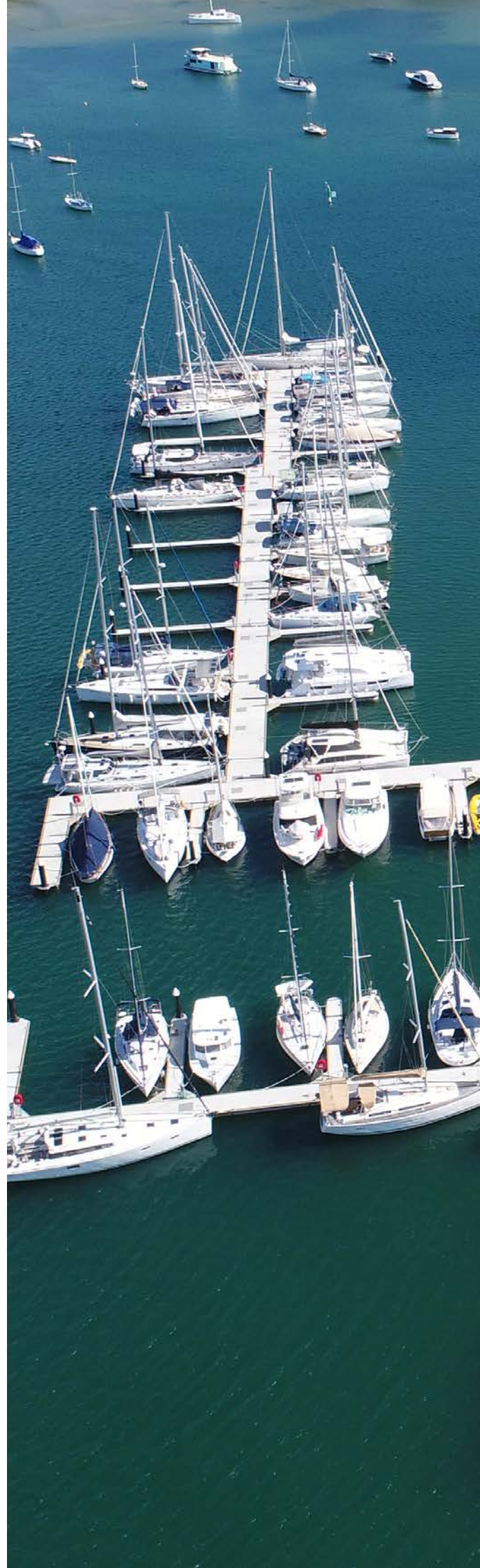
The Sydney Club had excellent bar and dining facilities available for lunch and dinner and RPAYC members were welcome to join in any of its activities such as golf and theatre parties. The Sydney Club ceased when it amalgamated with the University and Schools Club, which is now situated at 60 Phillip Street, Sydney.

The RPAYC Clubhouse was erected on Green Point together with four marina arms on the western side of Green Point and additional hardstand areas.



CLUBHOUSE FACILITIES

- Halyards Bar and Bistro offers relaxed alfresco dining, Wednesday through Sunday.
- Alfred's Table on Friday evenings offers a superb a la carte dining experience.
- Edinburgh Bar on Friday evenings is the perfect place for a pre-dinner aperitif, with an open fire in winter and balcony to watch the sunset in summer.
- Function and meeting rooms – available to hire free of charge for RPAYC Members.
- Jack Gale Centre (the Club's training facility).
- Library, children's playground and billiards room, featuring two full size billiard tables.
- Sailfit Fitness Centre (gym fees are additional to membership fees and an induction must be undertaken prior to becoming a Sailfit Gym member).
- Laundry, showers, disabled amenities.





MEMBERSHIP OF THE RPAYC

CATEGORIES OF MEMBERSHIP

- Full – obligatory for all boat owners (except off the beach craft)
- Full Family – boat owner, children aged 6-21 and a spouse (if applicable)
- General - for non-boat owners, however non-boat owners may still join as Full members
- General Family – non-boat owner, children aged 6-21 and a spouse (if applicable)
- General Intermediate (for ages 22 -29) - for boat and non-boat owners
- Spouse - for spouse/partner of Full or General members
- Youth - children aged 6-21 years

APPLICATION PROCESS

- Application
- Fees
- Legislative requirements
- Interview
- Election

HOW TO APPLY

Dependent on the timing of receipt of the application, the process should take approximately 3 weeks.

To commence the membership process, complete and return a Nomination Form. Forms are available from the Club Reception or they can be downloaded from our website

www.rpayc.com.au.

Please note a separate Nomination Form for each candidate must be completed.

APPLICATION

All adult applications must be proposed and seconded by current RPAYC members. Proposers and Seconders must have been RPAYC members themselves for at least 12 months and have known the applicant for a period of at least 12 months. If the applicant is unable to provide a proposer and or seconder, please contact membership on:

Email: membership@rpayc.com.au

Phone: (02) 9998 3700.

F E E S

Joining fee – A joining fee is payable on submission of application. Joining fees are:

Full member applicants- \$825.

General member applicants- \$220.

Spouse and Youth applicants— no joining fee.

Annual Subscription fees – the Club's membership billing period runs May to April each year. Pro-rata subscription fees will be rendered when the nomination is approved by the Board. Youth members pay no annual subscription under a Family membership (only the Youth Competition Support Fund – detailed at right).

House Entitlement (HE) - The House Entitlement contribution (\$220 per annum) is designed to encourage members to support the Club's Food and Beverage facilities.

The HE is invoiced in two transactions each year (\$110 at the end of April and \$110 at the end of October). Once paid, the HE can be used to cover Food and Beverage purchases that have been charged to member accounts or to put towards annual Sailfit Gym membership fees or Club run courses. The HE expires on 30 April. If you do not make any F and B purchases within the year the HE is forfeited.

Youth Competition Support Fund (YCSF) - The YCSF is an internal fund to assist RPAYC Youth members in their pursuit of excellence when representing the RPAYC in external competitions. All adult members (with the exception of Spouse and Life Members) are charged \$30 per annum (billed with the annual subscription fee each May). As the major recipients of the fund, Youth members are charged \$60 annually.

LEGISLATIVE REQUIREMENTS

State laws (Registered Clubs Act) require the names and addresses of nominees to membership to be displayed on the Club's official noticeboard for 14 days. With regard to a nominee's privacy only the suburb of residence is displayed.

INTERVIEW

Applicants will be invited to a casual meeting with a member of the Membership Committee. This meeting will assist us to ascertain the interests/needs of the applicant in regards to their use of the Club.

ELECTION

The Membership Committee reviews the application and recommends it to the Board for approval. Applicants will be notified following their election.



SUMMARY OF FEES AND CHARGES



Royal Prince Alfred Yacht Club

Joining Fees and Annual Subscriptions

01/05/2020 to 30/04/2021

Joining Fee (GST inclusive)				
Full Member		\$825.00	WAIVED	
General Member & General Intermediate Member		\$220.00	WAIVED	
Youth Member		Nil		
Spouse		Nil		
Annual Subscription (GST inclusive)				
Membership Category	Subscription	+ House Entitlement*	+ Youth Competition Support Fund**	Total
Full (boat owner)	\$1490.00	\$220.00	\$30.00	\$1520.00
General (non-boat owner)	\$596.00	\$220.00	\$30.00	\$626.00
General Intermediate (22-26)	\$298.00	N/A	\$30.00	\$328.00
General Intermediate (27-29)	\$447.00	N/A	\$30.00	\$477.00
Youth (6 to 22)	\$149.00	N/A	\$60.00	\$209.00
Spouse	\$149.00	N/A	N/A	\$149.00
Family Membership Packages				
If you are interested in a Family Membership package, please contact our Membership Coordinator on 02 9998 3705 or by email: membership@rpayc.com.au or contact Reception. Children are included in a Family Membership Package subscription. There is a voluntary \$60 YCSF charge for each child.				
Sailfit Gym Membership				
Annual access fees are for the period May to April. Members are required to undertake an induction prior to using the gym.				
Full Member		\$173.00		
Full Family Membership Package		\$473.00		
General and Intermediate Members		\$300.00		
General Family Membership Package		\$600.00		
Youth Member		\$173.00		
*House Entitlement and **Youth Competition Support Fund Explained				
The House Entitlement encourages members to support the Club's operations. The House Entitlement can be redeemed through eligible purchases charged to a member's account, such as food and beverage, Club run sail training courses and the Sailfit Gym membership access fee. \$110 is invoiced in April and October each year. The HE expires on 30 April each year. Any unused funds on an account are forfeited. Please note: no HE will be billed in April 2020 due to COVID-19.				
The Youth Competition Support Fund is an internal fund to assist RPAYC Youth members in the pursuit of excellence when representing the Yacht Club at external competitions. Please note: YCSF is voluntary for the 2020-21 subscription year due to COVID-19.				

Royal Prince Alfred Yacht Club
16 Mitala Street, Newport, NSW 2106
T: 02 9998 3700 | E: membership@rpayc.com.au | W: rpayc.com.au

BENEFITS OF MEMBERSHIP

MEMBER PRICES* FOR:

- All food and beverages.
- Race entry (free for Full members).
- Slipping and antifouling in the fully serviced RPAYC Boatyard.
- Sail training programs for adults, youths and children.
- Club functions and other social events.
- Member function bookings (free room hire).
- SailFit Fitness Centre membership (additional cost to annual subscription and an induction must be undertaken first).

COMPREHENSIVE SAILING PROGRAMS:

- Year-round inshore and offshore racing (Wednesdays and Saturdays), Twilight racing (Tuesdays and Thursdays through summer) and off the beach Centreboard racing.
- Club, state and national regattas.
- Extensive cruising calendar – both on and off the water with local and longer cruises.
- Youth development programs.
- Windsurfing.
- Integrated sailing activities.
- Training programs for adults and youths, including Australian Sailing OutThere program for 12 - 17 year olds.
- Crew register.
- Comprehensive training for race management volunteers.

CLUB FACILITIES*:

- Car accessible parking during club visits.
- Marina, hardstand (with crane) and club moorings.
- Equipment storage areas.
- Tender service to member moorings (within the Club tender service area).
- Pump out facility, gas bottle refills.
- Recreational moorings in Pittwater and The Lower Hawkesbury River waterways.
- Disabled access for boat launching.
- Complete waterfront service facilities including a chandlery, rigger, shipwright, electrician, engineer and brokerage.
- Laundry, showers and disabled amenities.
- Library, gym, children's playground and billiards room.
- Use of the RMYC Broken Bay shuttle bus service.

OTHER:

- Complimentary Australian Sailing membership.
- Member accounts billed monthly.
- Weekly E-Newsletter and Annual Yachtsman magazine.
- Birthday voucher for use at Halyards Bistro.
- Free Wi-Fi.
- Reciprocal arrangements with selected yacht clubs worldwide.
- Can sign in guests.

*Conditions apply.

RPAYC ON WATER ACTIVITIES

YACHT RACING

Royal Prince Alfred Yacht Club is one of Australia's leading Clubs within the sport of sailing and is regarded as one of the premier Yacht Clubs in Australia.

The Club's Sailing program and activities reflect this standing and are second to none. Our yacht racing program is innovative, safe, fun and user-orientated with a varied program year round, combining inshore and offshore racing, mini regattas, class events and special Club races for the whole family. We pride ourselves on the ability to host high quality, professional events in a pristine environment. During Twilight hours, a Women's Tuesday Series

and a Thursday Open Series is held.

Members and visitors of any age or ability can enjoy the various classes, divisions, great sailing locations and competition.

Crew are a major aspect of sailing, whether new to sailing or experienced.

Crew are always welcome to join races. Register using the online crew register "**Crew With Me**" at <http://crewwith.me/> or "**My Sail**" at www.mysail.team. For more information contact the Sailing Office on **02 9998 3761**.



A photograph of a sailboat in a bay. The sailboat is white with a dark hull and has several people on board. It is surrounded by other sailboats in the background. In the foreground, there are pine trees and their branches. The water is clear and blue. The sky is blue with some clouds.

CRUISING

Cruising activities are organised by the RPAYC Cruising Committee for all members and their sailing friends. The Cruising Committee organises a comprehensive event schedule which includes educational evenings with expert and informative speakers, social events and sailing activities.

Inshore cruises in the Pittwater/Broken Bay/Hawkesbury area with their myriad of secluded bays, are arranged on a regular basis. A post-Christmas cruise is organised each year to a coastal destination over a period of around two weeks. Cruise planning is undertaken with the acknowledgement that cruising sailors do not venture out in unsuitable weather conditions.

Cruising in a group is not only a great way to make new friends, it also offers the less experienced sailor the added reassurance of knowing support and assistance is close by. The RPAYC Cruising Committee endeavours to have something for everyone.

RPAYC ON WATER ACTIVITIES

CENTREBOARD RACING

Centreboard racing is conducted on Sundays over the summer months with the Winter series commencing in May. RPAYC's Centreboard Division welcomes all classes to join in.

Although RPAYC dinghy sailors have a long history of success on a state, national and international level; it's not all about medals, glory and international recognition. It's about having fun in a supportive environment that allows kids, youths and adults alike to meet and form an active family based community.

Using supported International Dinghy classes, parents and kids can race alongside one another and can take their sailing to whatever level they desire. The natural progression from class to class that exists at RPAYC allows for a seamless transition from dinghy into keelboat sailing later on.

Contact the Sailing Office for more information:

Phone: (02) 9998 3771

Email: sailing@rpayc.com.au









SAIL TRAINING

Royal Prince Alfred Yacht Club provides the largest Sailing School on Pittwater offering accredited Australian Sailing (AS) courses.

Alfred's Training seeks to help you achieve your sailing goals and gain confidence on the water, whether you are Grand Prix racing or cruising up the coast. Offering options for kids through to adults,

dinghies through to yachts, and high-performance racing to first aid and sea safety, we can help you develop whatever skills you need.

We specialise in the delivery of courses for all ages from beginner sailors/new boat owners, boat handling skills, class development, private sessions and shore based professional qualifications.

ADULT LEARN TO SAIL AND DEVELOPMENT

Be introduced to sailing for the first time or develop racing and spinnaker skills on the Club's fleet of Elliott 7s.

- 5 levels following the Australian Sailing recognised syllabus
- Private coaching sessions available
- Fully qualified instructors and coaches



RPAYC runs the Australian Sailing Tackers Program, a nationally recognised Learn to Sail for 7 – 12 year olds.



- Fun, games-based learning environment
- All safety equipment and boats provided
- Fully qualified instructors
- Safety boats that meet national best practice
- Courses in the holidays, and during school term

The Club has partnered with Industry Leaders to deliver a wide range of programs!

- First aid qualifications
- VHF radio licencing
- Sea safety coaching (including the SSSC)
- Comprehensive navigation courses
- Private coaching sessions on your own boat



RPAYC provides sailing opportunities for more than 250 school students a week during summer!



- High School learn to sail
- High School teams racing
- Primary School learn to sail
- Interschool teams racing events

Contact the Sailing Office for more information:

Phone: (02) 9998 3771 **Email:** sailtraining@rpayc.com.au

WATERFRONT FACILITIES



RPAYC was awarded “**Club of the Year 2017/2018**” at the Marina Industries Associations’ biennial award which recognises excellence and celebrates industry best practice.

RPAYC is proud to have been the first club in the world awarded the prestigious 5 Gold Anchor accreditation which acknowledges the Club’s commitment to high quality service, safety and environmental best practice. RPAYC also holds a Level 3 Clean Marina and Fish Friendly accreditation.

As a facility holder we will keep you well informed and you will receive regular communication from the Club and the Waterfront Team. We will ensure that you are able to store your vessel with confidence and that your sailing

experience is made easy.

- Berth assistance
- 7 day (on demand) tender service
- Services wharf – water, power, pump out and LPG gas
- Free Club Race Entry for full members
- 24hr CCTV surveillance and after hours security
- Modern amenities

RPAYC is an ideal base to race and cruise from or to explore the pristine waterways of Pittwater. We would like to invite you to inspect the facilities so you can start enjoying the convenience, service and discounts available as a member of the Club.

VESSEL STORAGE OPTIONS

Berths

The floating marina has 342 berths which can accommodate vessels to 30m (98') and depths up to 15m (50'). Berth fees include shore power, free shore power lead testing and water.

Moorings

18 moorings located around the Club accommodating vessels up to 22m (65').

Club Moorings include a 7 day tender service and mooring maintenance.

Hardstands

Two large hardstands accommodating up to 83 vessels. The hardstands provide members with an easy and safe method of storing, launching and retrieving vessels.

Centreboard storage racks and rigged storage accommodating up to 100 centreboard dinghies.

Recreational Moorings

13 member only recreational moorings conveniently located at The Basin, America Bay and Refuge Bay.

Dinghy Racks

30 racks available located in easy access areas.

Lockers

Large storage lockers are available for the storage of vessel equipment and sails.

Contact Kylie Brown, Marine Services for more information:

Phone: (02) 9998 3741 **Email:** waterfront@rpayc.com.au

MEMBERS FACILITY STORAGE RATES (FROM 1ST JANUARY 2020)



THE ROYAL PRINCE ALFRED YACHT CLUB STORAGE RATES 2020

Club Members receive highly competitive permanent and casual storage rates, join the Club and take advantage of the many benefits of RPAYC Membership!

		<u>Nightly</u>		<u>Monthly</u>	
	Actual Length	Non-Member	Member	Non-Member	Member
BERTH	up to 40ft	\$65	\$35	\$1,502	\$798
	41ft – 50ft	\$80	\$60	\$1,850	\$1,368
	51ft – 60ft	\$90	\$67	\$2,028	\$1,528
	61ft + 70ft	\$100	\$75	\$2,311	\$1,710
	71ft +	POA	POA		
Vessels berthed on marina 'T head's' will be charged x2 standard rate for full occupancy or 1.5x rate for half occupancy					
MOORING	up to 40ft	\$54	\$36	\$1,130	\$821
	41ft – 50ft	\$59	\$42	\$1,320	\$958
	51ft – 60ft	\$64	\$47	\$1,500	\$1,070
OTHER	Hardstand	\$22.25	\$18.10	\$607.50	\$497
	Trailer / other	\$22.25	\$18.10	\$607.50	\$497

MEMBER PERMANENT STORAGE RATES

		Per Foot Per Month	
Marina Berth		\$ 25.00	Minimum lengths
Commuter Berth		\$ 28.10	Min. 20'
Marina Berth T heads	full / half occupancy	\$50.10/\$37.50	Minimums lengths
Multi-Hull Berth		\$37.50	Min. 40'
Mooring		\$13.00	Min. 30'
Green Point Hardstand		\$14.55	
Crystal Bay Hardstand		\$14.15	
One Design Storage		\$169.15	*terms apply
		Per Month	
Locker Standard / Large		\$67.75 / \$78.05	
Hardstand Locker		\$57.95	
Centreboard Crystal Bay Hardstand		\$66.40	
Centreboard Optimist Rack	ground, first Level / top	\$36.25/\$30.15	
Centreboard Rack	ground, first level / top	\$42.30/\$36.25	
Centreboard Rigged Lawn		\$66.40	
Centreboard Rack storage		\$72.60	
Tender/Rib Rack	facility holder/non	\$44.20 / \$61.80	

* All Charges are inclusive of GST * "Actual Length Overall" is the maximum length of a vessel measured parallel to the waterline and Includes all appendages to the hull such as rudders, bowsprits, davits and dinghies, protruding equipment such as anchors and spars and any allowance for a folding transom.

* One Design Storage T&C's apply, * Non-member fees payable in advance, cheques not accepted and T&C's apply, *all credit card payments incur a 1% surcharge.

RPAYC BOATYARD

VESSEL SERVICING

Housing a 50 tonne travel lift, the Boatyard has an industry leading reputation, specialising in being a 'one stop shop'. What separates us from other yards?

- We professionally spray (not roll) for a superior finish and longer lasting result.
- Two coats of antifoul and a third around the leading edges.
- A water blast and hard wet rub is included with all antifoul packages.
- Complimentary light acid wash on the topsides.
- Complimentary deck wash after completion.
- Punctuality and we work with our onsite tenants to complete the schedule of service.
- The price we quote, is the price you pay.

The Boatyard offers a pick up/delivery service for boats stored on Club facilities for all antifoul services.

For more information, contact:

Monique Mobbs, Boatyard Services Manager

Phone: (02) 9998 3751

Email: boatyard@rpayc.com.au



FOOD AND BEVERAGE

Halyards Bistro and Bar has beautiful water views and is the sailor's meeting place prior to and after racing. Come down for breakfast, Saturday and Sunday from 8am. We are open seven days a week, with a full Chef menu and daily blackboard specials Wednesday through Sunday, or drop in for a beverage and enjoy the sunset. To ensure a table book through Reception.

Alfred's Table opens on Friday evenings from 6pm for a more formal dining experience. The superb a la carte menu changes weekly. Bookings are essential.



Admirals Cup Room/Pittwater Room/Edinburgh Bar
Available for functions.



A close-up photograph of a chocolate-glazed ham, a slice of ham, a piece of orange, and chocolate shavings. The ham is the central focus, with a thick, dark chocolate coating. A slice of ham is placed next to it, showing the interior. A piece of orange is also visible, and there are many chocolate shavings scattered around the base of the ham.

**Trading Hours (vary according to season and trade,
check the website for updated times).**

**For more information contact Mandy Hansen, House
Manager on:**

Phone: (02) 9998-3732

Email: functions@rpayc.com.au

SAILFIT

The focus of Sailfit is to create an environment that is welcoming and results driven whether your objective is general fitness, sailing related or weight loss. Members may use the facility independently, engage a personal trainer or join a class.

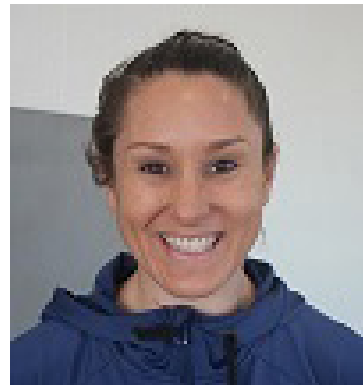


MEET THE TRAINERS

Tana Anderson – Sailfit Supervisor

(Contact Tana on 0478 034 659 or email on tana.anderson@rpayc.com.au)

With 15 years' experience in strength training, 8 years in the health and fitness industry including 2 years as a business owner and 15 years playing tennis at an elite level, Tana brings a wealth of knowledge and experience to her training. Tana's passion lies in educating her clients on a holistic and healthy view of health and showing them a nutrition and exercise program to suit their specific needs that is fun, rewarding and sustainable. She loves nothing more than pushing her clients to achieve amazing results they never thought possible- whether that's finally being able to touch their toes, running a marathon or losing 10kg.





SAILFIT ANNUAL ACCESS FEE

The Sailfit annual access fee coincides with the annual subscription year May – April. The Sailfit access fee may be offset using the House Entitlement.

Annual Fees:

- Full member \$173
- Full Family \$473
- General & Intermediate members \$300
- General Family \$600
- Youth member \$173

*Individuals of Family memberships may choose to join Sailfit and pay only the single member fee.

*An induction is required for all members prior to using Sailfit. Please contact Tana Anderson to organise a convenient time to have your induction.





**COME SAILING AT THE
ALFRED'S TODAY**

CHOOSE FROM WEEKLY EVENTS
* TUESDAY WOMEN'S TWILIGHT'S * WEDNESDAY RACING
* THURSDAY FUN TWILIGHT'S * SATURDAY INSHORE/OFFSHORE
* FEATURE EVENTS & REGATTAS
* SUNDAY CENTREBOARD RACING & TRAINING

 **Visit the Club today:**
The Royal Prince Alfred Yacht Club
16 Mitala St, Newport NSW 2016
Phone: 9998 3700
Email: sailing@rpayc.com.au
Web: www.rpayc.com.au/sailing



